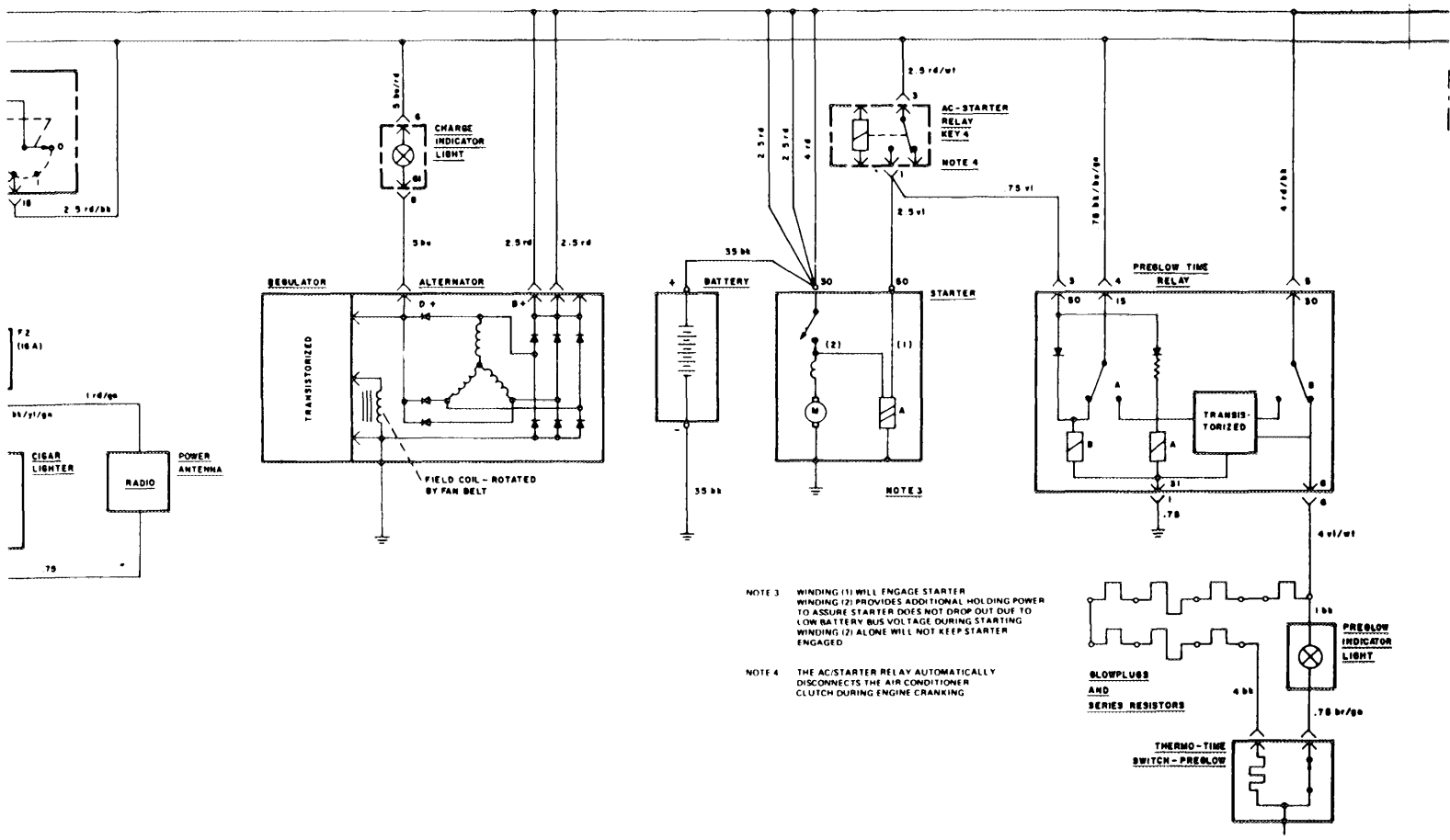
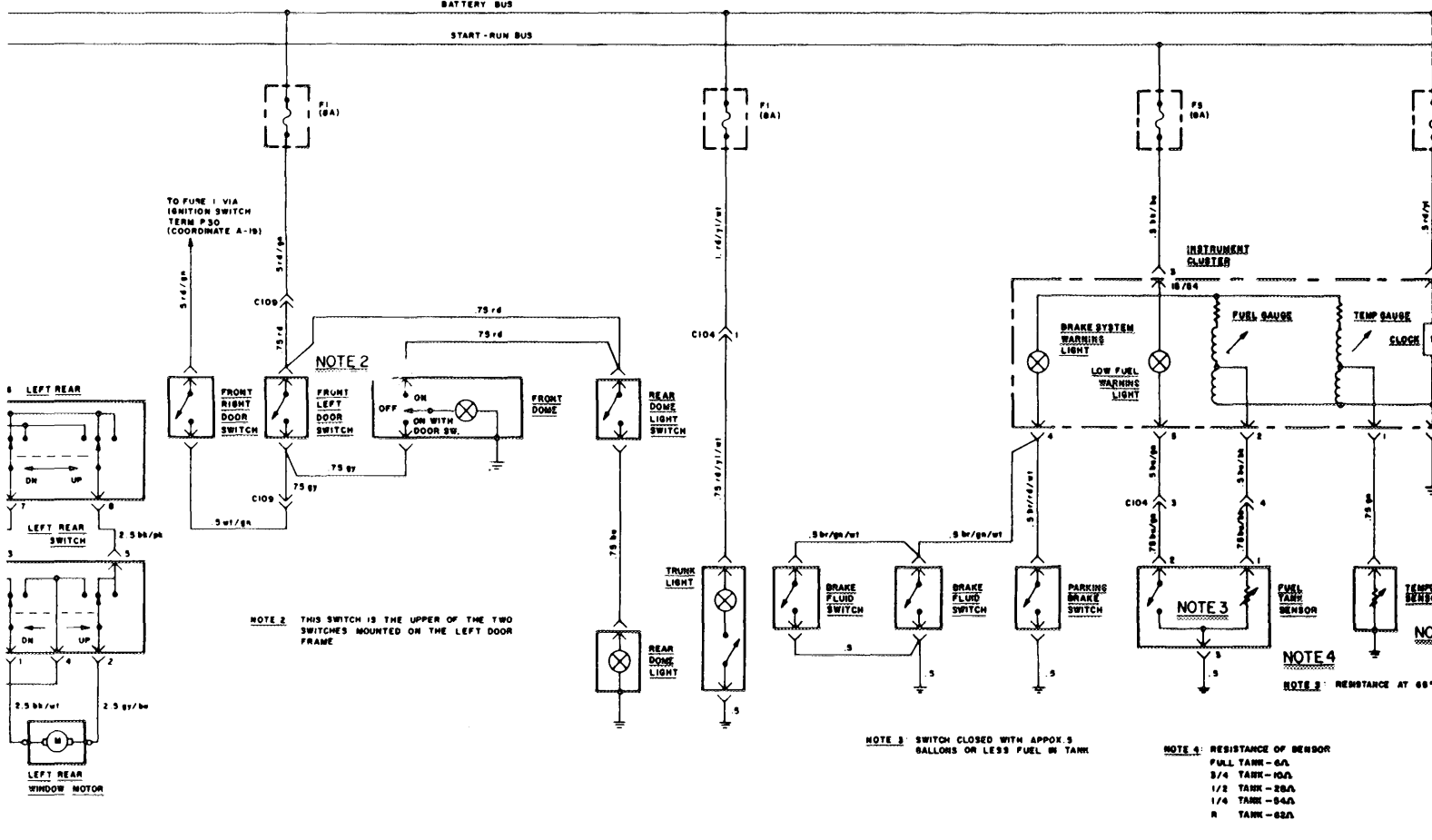


GARHTER RADIO CHARGE START GLOW PLUG CIRCUIT



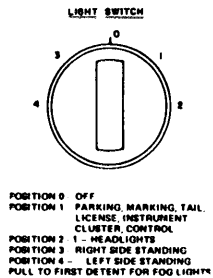
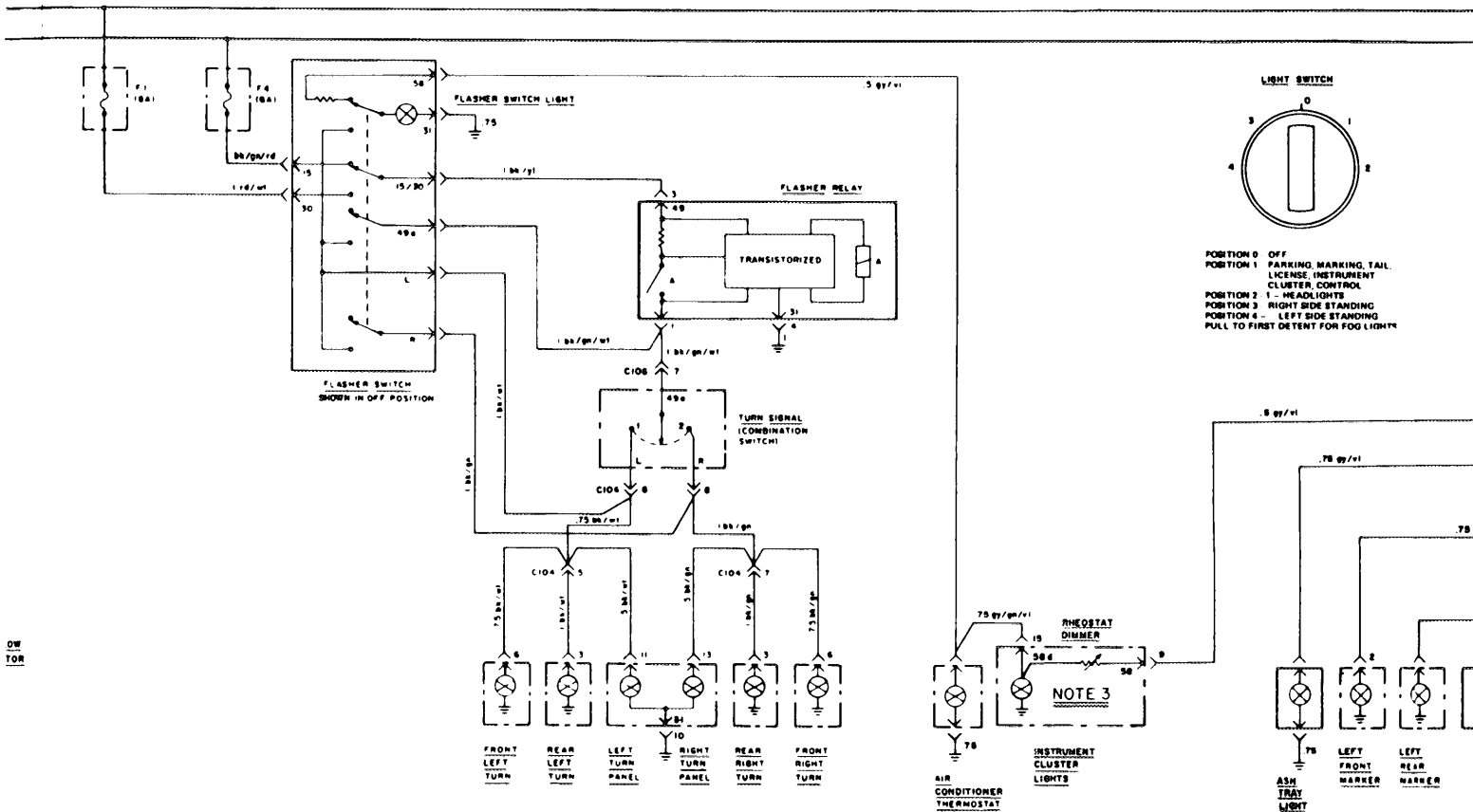
7 8 9 10 11 12

INTERIOR LIGHTS TRUNK LIGHT INSTRUMENT CLUSTER



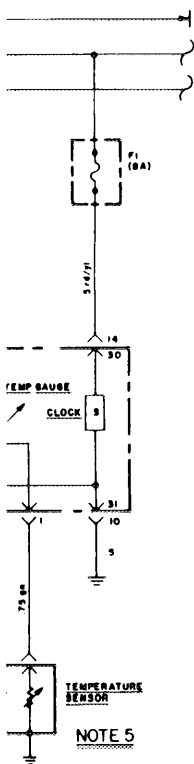
TURN SIGNAL AND FLASHER

CONTROL LIGHTS



NOTE 3 THERE ARE 3 INSTRUMENT CLUSTER BULBS IN PARALLEL

12 | 13 | 14 | 15 | 16 | 17



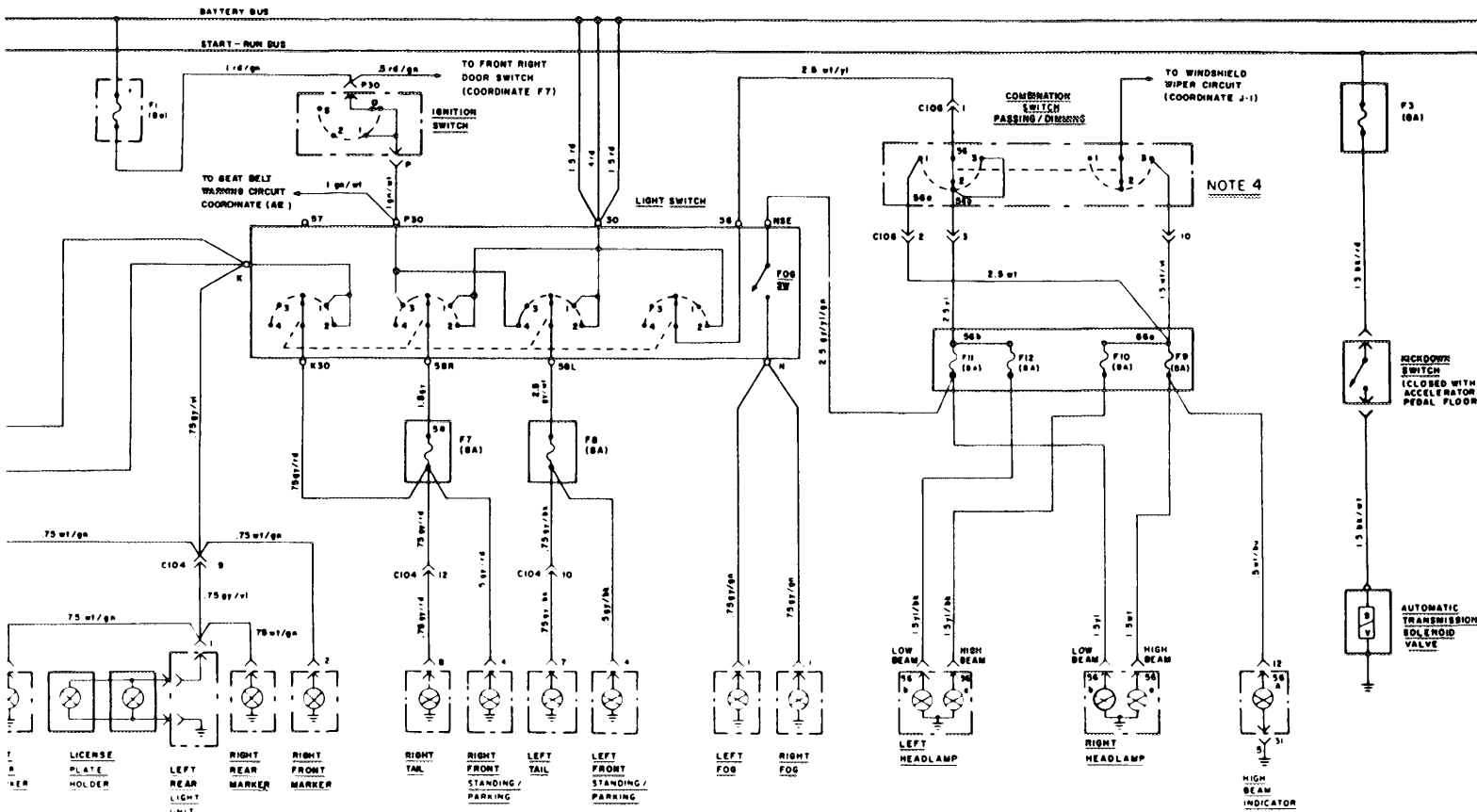
STANCE AT 65°F - 480 Δ

COMPONENT INDEX

SYSTEM/ COMPONENT	LOCATION ON VEHICLE	LOC FIG NO	TERM FIG NO	SYSTEM/ COMPONENT	LOCATION ON VEHICLE	LOC FIG NO	TERM FIG NO
CHARGE Regulator C 105	Alternator Firewall			TRUNK LIGHT C 104 (12 pins)	Under dash, driver's side	6	T4
ELECTRIC WINDOWS Front seat switch Window relay — key 10	Front seat console Right firewall under fuse bracket		T8 T7	TURN SIGNAL AND FLASHER Flasher relay C 104 (12 pins) C 106 (13 pins)	Under dash, driver's side Under dash, driver's side Under dash, driver's side	6 6 6	T6 T4 T5
C 108							
GLOW PLUG CIRCUIT Preglow time relay Thermo-time switch (preglow) AC-Starter Relay Key 4	Under dash, left side Engine block, left side Right firewall, under fuse bracket		T7				
INSTRUMENT CLUSTER Brake fluid switches Coolant temp sensor Fuel tank sensor Parking brake switch C 104 (12 pins)	Reservoir Left front cylinder head Trunk Top parking brake Under dash, driver's side	3 9 6	T4				
INTERIOR LIGHTS C 109	Console						
KICKDOWN CIRCUIT Switch	Below accelerator pedal	8					
LIGHT SWITCH C 104 (12 pins) C 106 (14 pins)	Under dash, driver's side Under dash, driver's side	6 6	T4 T5				
SEAT BELT WARNING Ignition warning switch Warning unit	Ignition switch Under dash, driver's side		T12				
SLIDING ROOF Motor	Behind spare tire						
START AC-Starter relay, key 4	Right firewall under fuse bracket		T7				



1 - Main
2 - Heat
3 - Brake
4 - Wipe



NOTE 4 POSITION 1 - HIGH BEAM
 POSITION 2 - LOW BEAM
 POSITION 3 - HIGH BEAM FLASH



LOCATION FIGURES



Fig 1
1 - A/C Blower motor

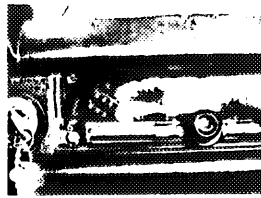


Fig 4
1 - C-113

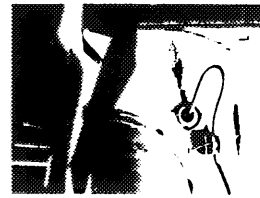


Fig 7
1 - C-112



Fig 2
1 - Change over switch



Fig 5
1 - Temperature switch, refrigerant



Fig 8
1 - Kickdown switch

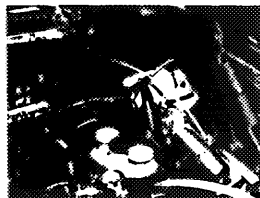


Fig 3
1 - Main fuse box
 2 - Heater blower pre resistors
 3 - Brake fluid switches
 4 - Wiper motor



Fig 6
1 - Flasher relay
 3 - Time delay relay, heated rear window
 5 - Interval wiper timer
 6 - C-104
 7 - C-106

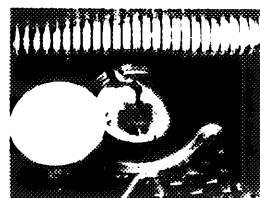
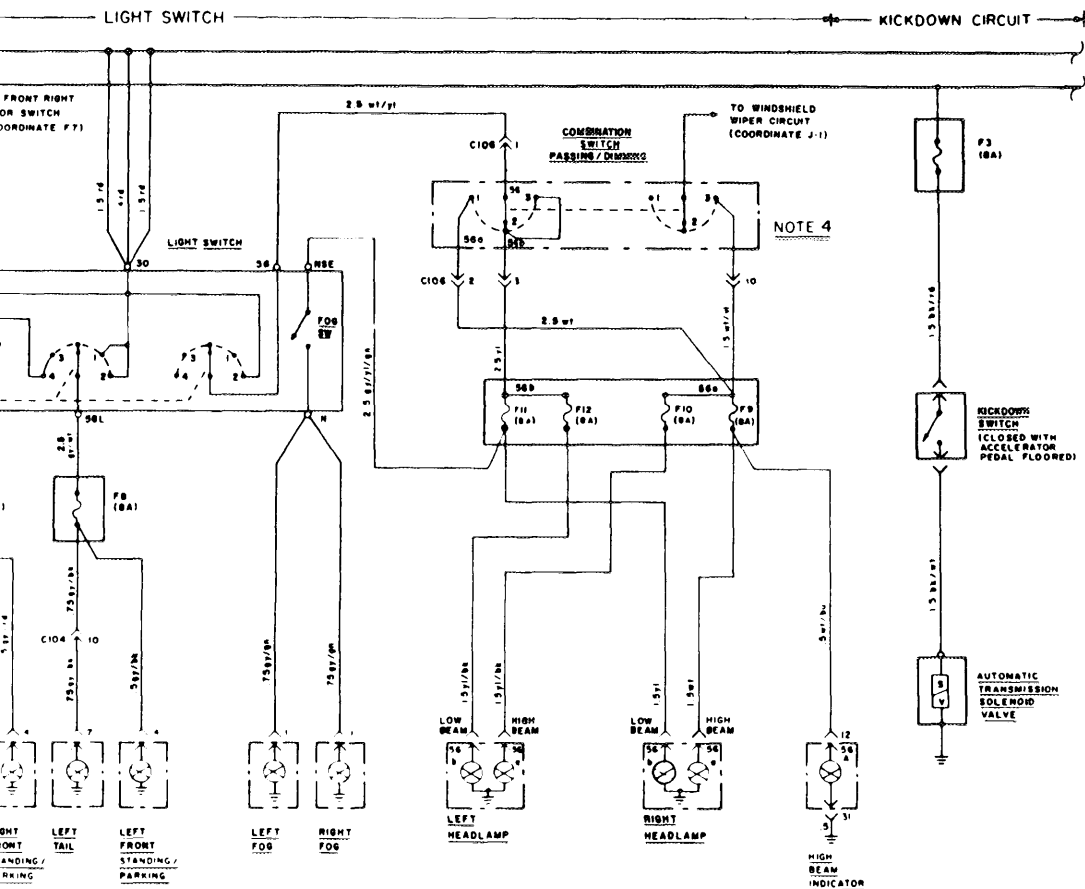


Fig 9
Fuel tank sensor

- AIR CONDITI
- AUXILIARY F
- BLOWER MC
- CHARGE
- CIGAR LIGH
- CLOCK
- COOLANT TI
- FUEL GAUGI
- HEATED REA
- HEATER COI
- HORNS
- KICKDOWN CIRCI
- LIGHT CIRCU
- AIR CON
- BACKUP
- BRAKE
- BRAKE:
- CIGAR L
- FOG
- GLOVE E
- HEAD
- INSTRUI
- INTERIO
- LOW FU
- MARKEI
- PARKIN
- STANDII
- TAIL
- TRUNK
- PREGLOW
- RADIO
- SEAT BELT V
- SLIDING ROO
- START
- TURN SIGNA
- WINDOWS
- WINDSHIELD

- POWER BUS
- SPECIAL GRA



NOTE 4 POSITION 1 - HIGH BEAM
 POSITION 2 - LOW BEAM
 POSITION 3 - HIGH BEAM FLASH

A
 B
 C
 D



LOCATION FIGURES

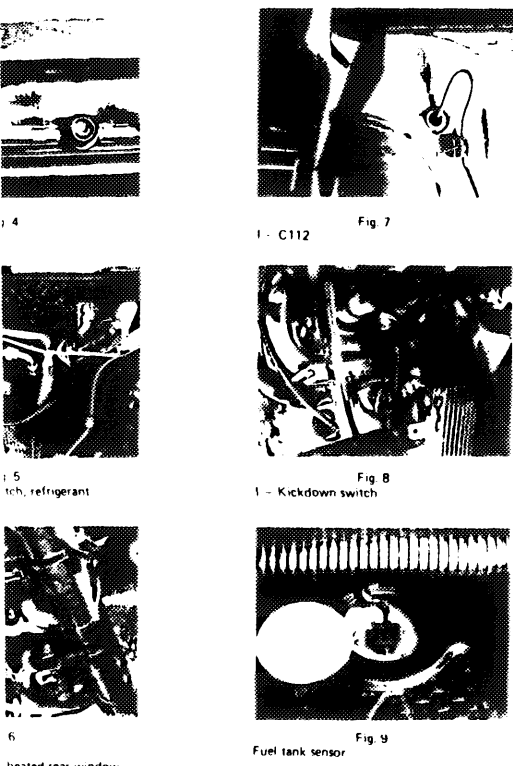


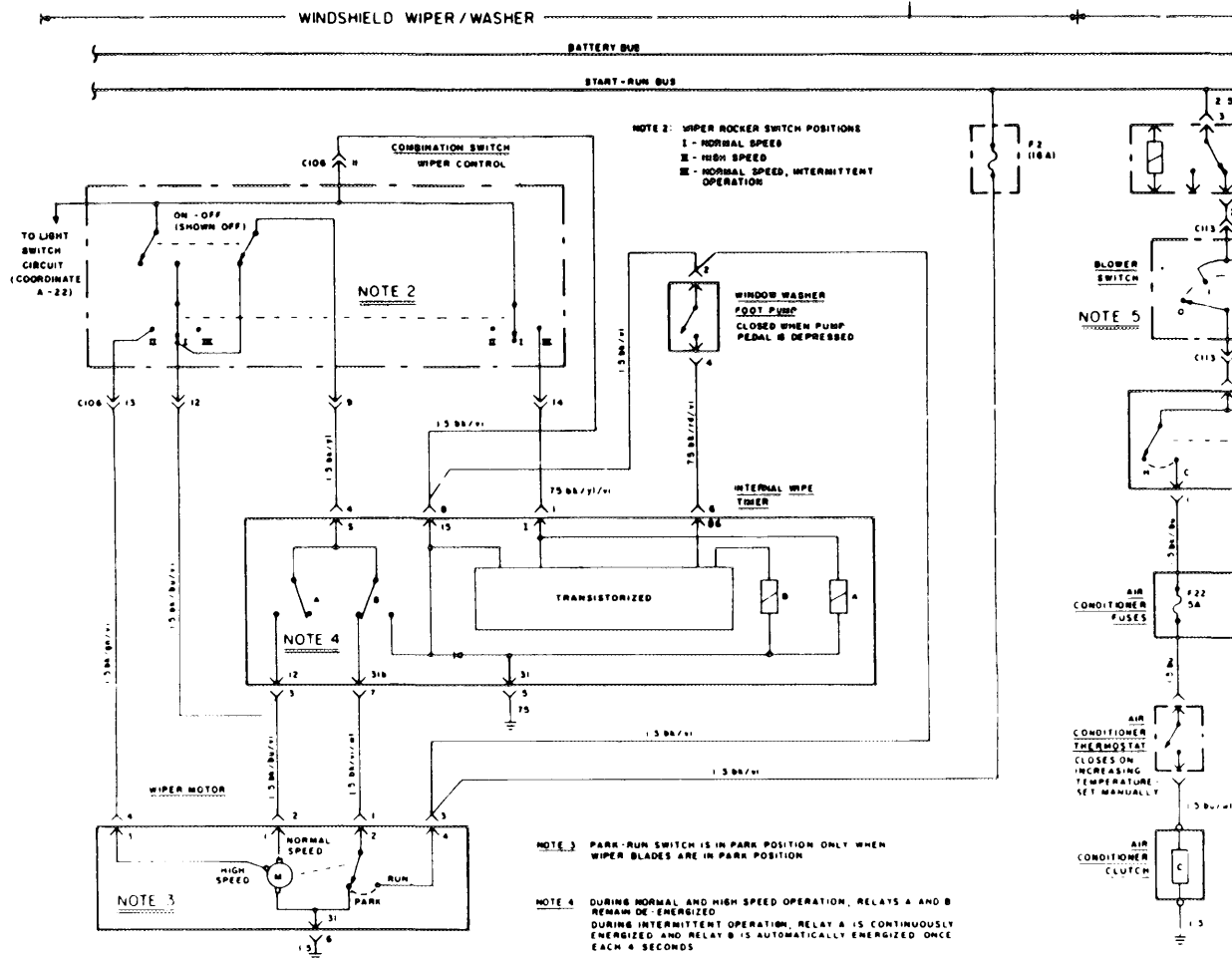
Fig. 7

Fig. 8

Fig. 9

1975 300D

AIR CONDITIONING CONTROL	L5
AUXILIARY FAN	L10
BLOWER MOTOR CONTROL	L6
CHARGE	B8
CIGAR LIGHTER	C6
CLOCK	F12
COOLANT TEMPERATURE GAUGE	F12
FUEL GAUGE	F11
HEATED REAR WINDOW	L15
HEATER CONTROL	L6
HORNS	K11
KICKDOWN	B23
LIGHT CIRCUITS	
AIR CONDITIONING THERMOSTAT	D16
BACKUP	L16
BRAKE	L12
BRAKE SYSTEM WARNING	F10
CIGAR LIGHTER	D17
FOG	D21
GLOVE BOX	L13
HEAD	D22
INSTRUMENT CLUSTER	D16
INTERIOR	F8
LOW FUEL WARNING	F11
MARKER	D17/D19
PARKING	D20
STANDING	D20
TAIL	D19
TRUNK	H9
PREGLOW	C11
RADIO	C7
SEAT BELT WARNING	B3
SLIDING ROOF	F2
START	B5/B9
TURN SIGNAL/FLASHER	B14
WINDOWS	F4
WINDSHIELD WIPER/WASHER	L3
POWER BUS DETAILS	
SPECIAL GROUNDING CIRCUITS	L20

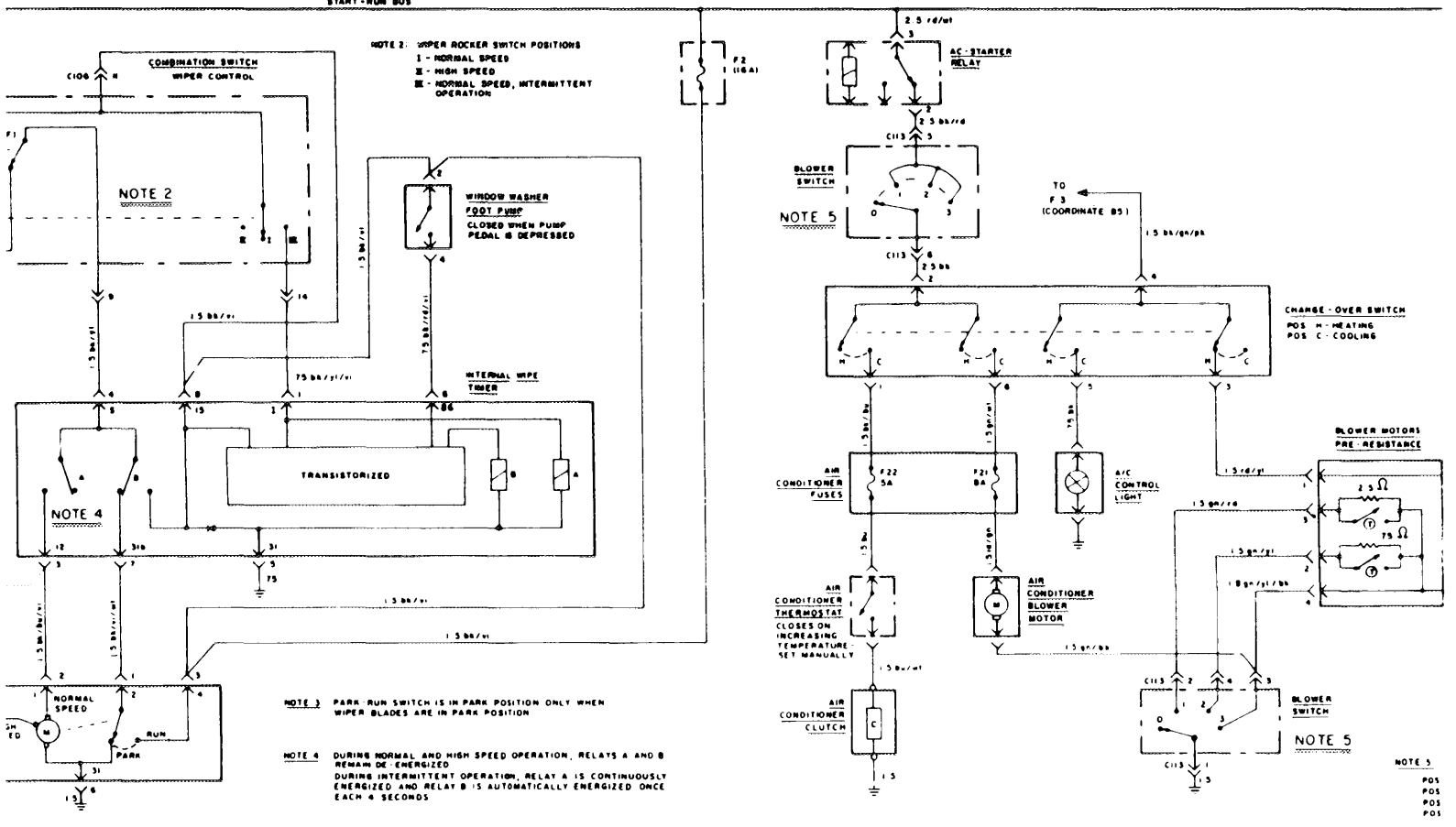


COMPONENT INDEX

SYSTEM / COMPONENT	LOCATION ON VEHICLE	LOC FIG NO	TERM FIG NO	SYSTEM / COMPONENT	LOCATION ON VEHICLE	LOC FIG NO	TERM FIG NO
AIR CONDITIONING/HEATING							
AC Blower motor	Center of console	1					
AC Starter relay key 4	Right firewall under fuse bracket		17				
Change over switch	Console left side	2					
Fuse 21 (AC blower)	Right firewall - aux box						
Fuse 22 (AC clutch)	Right firewall - aux box						
Heater blower motor pre-resistor	Forward of AC blower	3					
C 113 (6 pins)	Mounted to heater control lever plate	4	12				
AUXILIARY FAN							
Aux fan relay key 6	Below radio fuse						
Fuse 20 (aux fan)	Left fender - aux box						
Temp switch - engine	Thermostat housing						
Temp switch - refrigerant	Right firewall	5					
BACKUP							
C 104 (12 pins)	Under dash - driver's side	6	T4				
BRAKE LIGHTS							
Switch	Above brake pedal						
C 104 (12 pins)	Under dash - driver's side	6	T4				
HEATED REAR WINDOW							
Time delay relay	Under dash - driver's side	6	T14				
Fuse 19 (window)	Left fender - aux box						
C 112	Behind rear seat - right side	7					
HORNS							
C 106 (14 pins)	Under dash - driver's side	6	T5				
WINDSHIELD WIPER/WASHER							
Interval wipe timer	Under dash - driver's side	6	T10				
Motor	Firewall - left side	3					
C 106 (14 pins)	Under dash - driver's side	6	T5				

BATTERY BUS

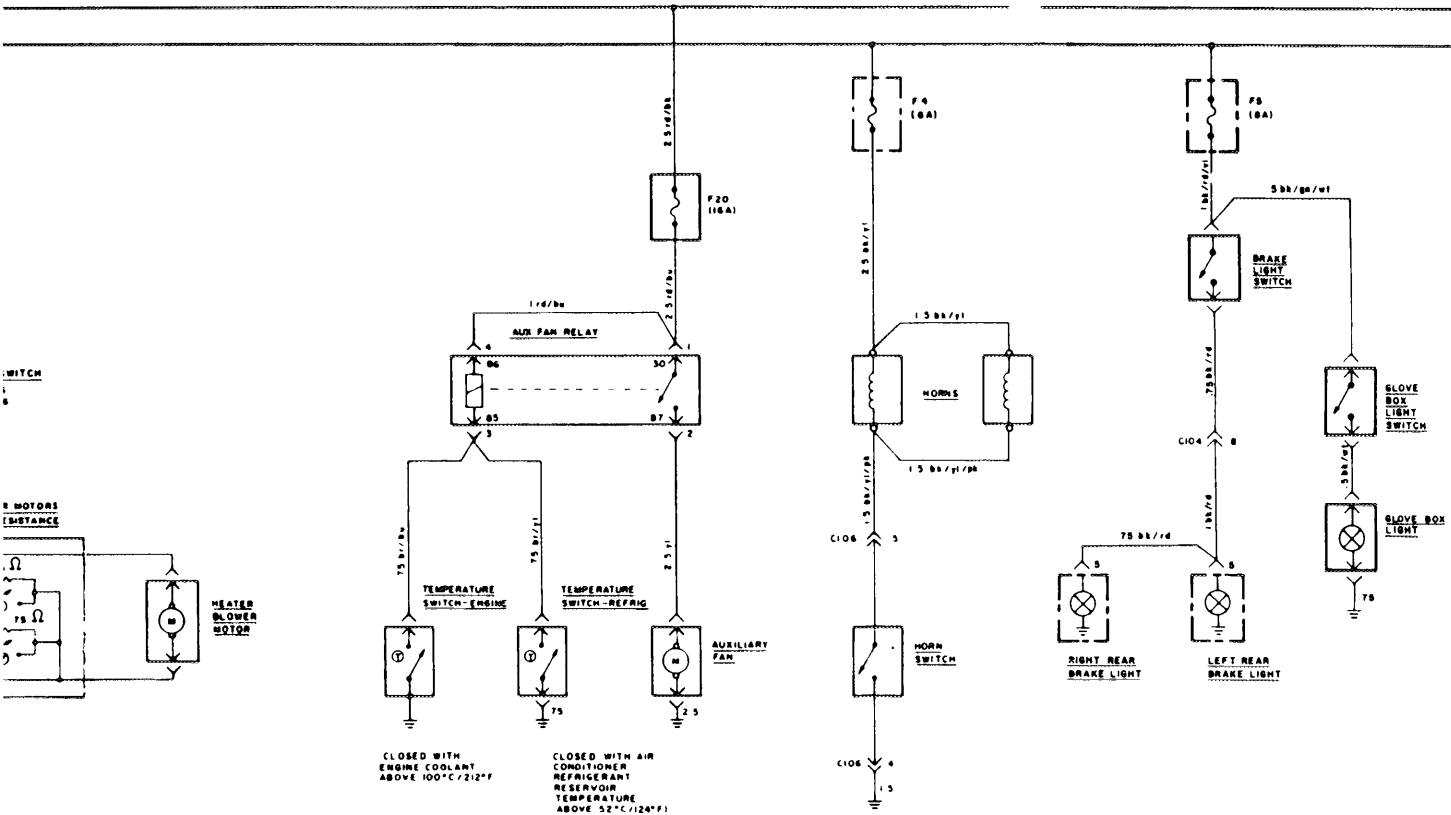
START-RUN BUS



COMPONENT INDEX

LOC

	LOCATION ON VEHICLE	LOC FIG NO	TERM FIG NO	SYSTEM/COMPONENT	LOCATION ON VEHICLE	LOC FIG NO	TERM FIG NO
NG	Center of console	1					
	Right firewall under fuse bracket		T7				
	Console, left side	2					
	Right firewall - aux box						
	Right firewall - aux box						
	Forward of AC blower	3					
	Mounted to heater control lever plate	4	T2				
	Below radio fuse						
	Left fender - aux box						
	Thermostat housing						
Right firewall	5						
Under dash - driver's side	6	T4					
Above brake pedal							
Under dash - driver's side	6	T4					
Under dash - driver's side	6	T14					
Left fender - aux box							
Behind rear seat - right side	7						
Under dash - driver's side	6	T5					
HER	Under dash - driver's side	6	T10				
	Firewall - left side	3					
	Under dash - driver's side	6	T5				



NOTE 3
 POS 0 - OFF
 POS 1 - LOW SPEED
 POS 2 - MEDIUM SPEED
 POS 3 - HIGH SPEED



LOCATION FIGURES

1975 300D

FUSE DATA

Fuse 1 (8 amps) Clock Flasher Interior lights Key Buzzer Trunk light	Fuse 8 (8 amps) Front standing parking (left) Left tail light	Fuse 20 (16 amps) Auxiliary fan motor Auxiliary fan relay
Fuse 2 (16 amps) Cigar lighter Windshield wiper/washer Radio	Fuse 9 (8 amps) High beam indicator Right head lights, high beam	Fuse 21 (8 amps) A/C Blower motor
Fuse 3 (5 amps) Heater blower motor A/C control light	Fuse 10 (8 amps) Left headlight, high beam	Fuse 22 (5 amps) Air conditioner clutch
Fuse 4 (8 amps) Turn signal Horns	Fuse 11 (8 amps) Fog lights Right head light, low beam	
Fuse 5 (8 amps) Backup lights Brake lights Glove box light Instrument cluster Seat belt warning Window control	Fuse 12 (8 amps) Left head light, low beam	
Fuse 6 (8 amps) Kickdown circuit	Fuse 13 (8 amps) Not used	
Fuse 7 (8 amps) A/C thermostat illumination Flasher illumination Front standing/parking (right) Instrument cluster lights Left and right marker lights License plate light Tail light (right) Ash tray light	Fuse 14 (8 amps) Not used	
	Fuse 15 (16 amps) Heated rear window	
	Fuse 16 Not used	
	Fuse 17 (16 amps) Left front window Right rear window	
	Fuse 18 (16 amps) Left rear window Right front window	
	Fuse 19 (16 amps) Sliding roof	

AIR CONDITIONING CONTROL	L5
AUXILIARY FAN	L10
BLOWER MOTOR CONTROL	L6
CHARGE	B8
CIGAR LIGHTER	C6
CLOCK	F12
COOLANT TEMPERATURE GAUGE	F12
FUEL GAUGE	F11
HEATED REAR WINDOW	L15
HEATER CONTROL	L6
HORNS	K11
KICKDOWN	B23
LIGHT CIRCUITS	
AIR CONDITIONING THERMOSTAT	D16
BACKUP	L16
BRAKE	L12
BRAKE SYSTEM WARNING	F10
CIGAR LIGHTER	D17
FOG	D21
GLOVE BOX	L13
HEAD	D22
INTERIOR CLUSTER	D16
INTERIOR	F8
LOW FUEL WARNING	F11
MARKER	D17/D19
PARKING	D20
STANDING	D20
TAIL	D19
TRUNK	H9
PREGLOW	C11
RADIO	C7
SEAT BELT WARNING	B3
SLIDING ROOF	F2
START	B5/B9
TURN SIGNAL/FLASHER	B14
WINDSIGNALS	F4
WINDSHIELD WIPER/WASHER	L3
POWER BUS DETAILS	L18
SPECIAL GROUNDING CIRCUITS	L20

HEATED REAR WINDOW

BACKUP LIGHTS

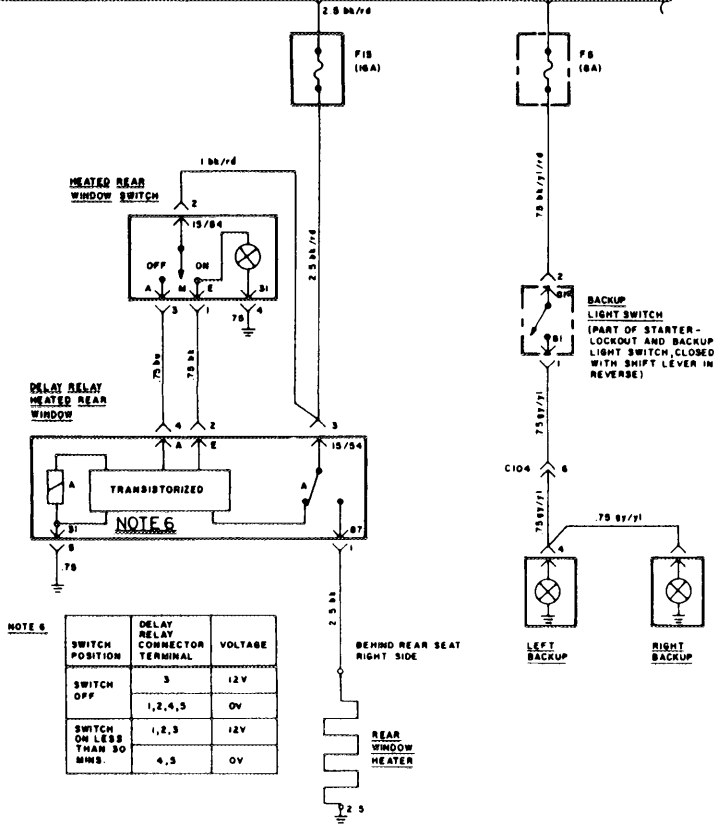
POWER BUS DETAIL

BATTERY BUS

START-RUN BUS

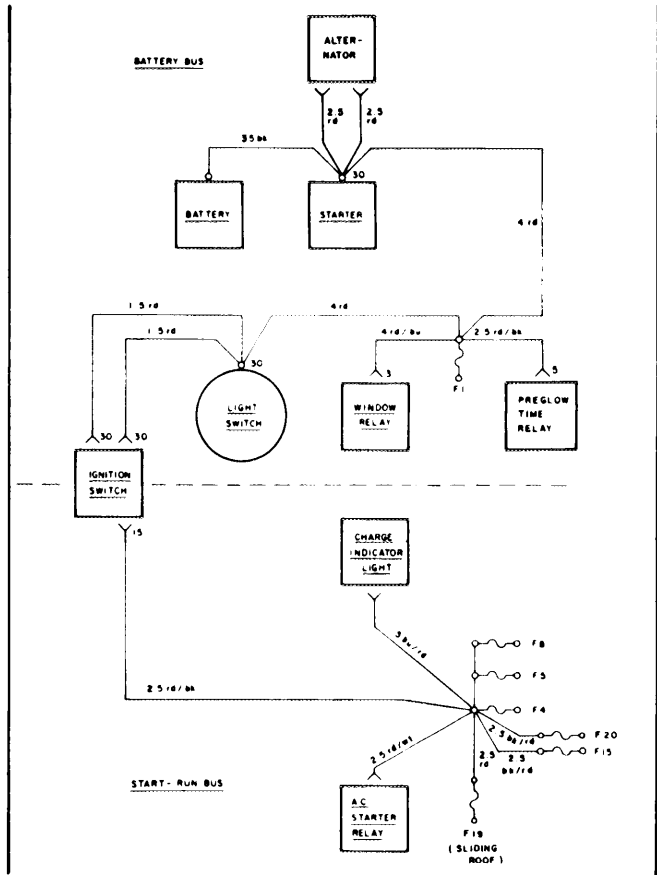
BATTERY BUS

START-RUN BUS



NOTE 6

SWITCH POSITION	RELAY CONNECTOR TERMINAL	VOLTAGE
SWITCH OFF	3	12V
	1,2,4,5	0V
SWITCH ON LESS THAN 90 MINS.	1,2,3	12V
	4,5	0V



14

15

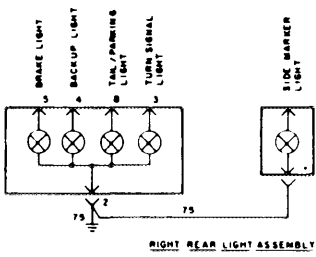
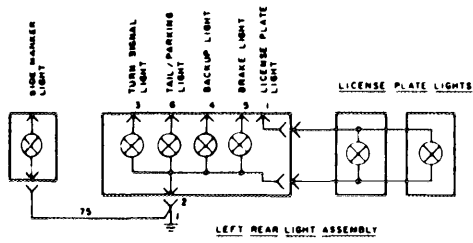
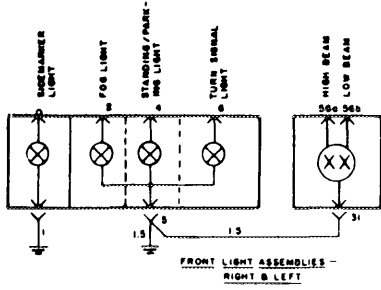
16

17

18

19

SPECIAL GROUNDING CIRCUITS



J

K

L

M